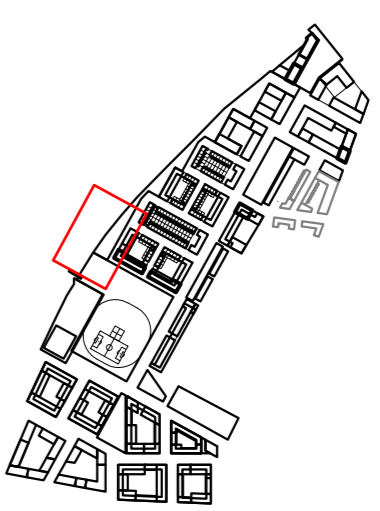
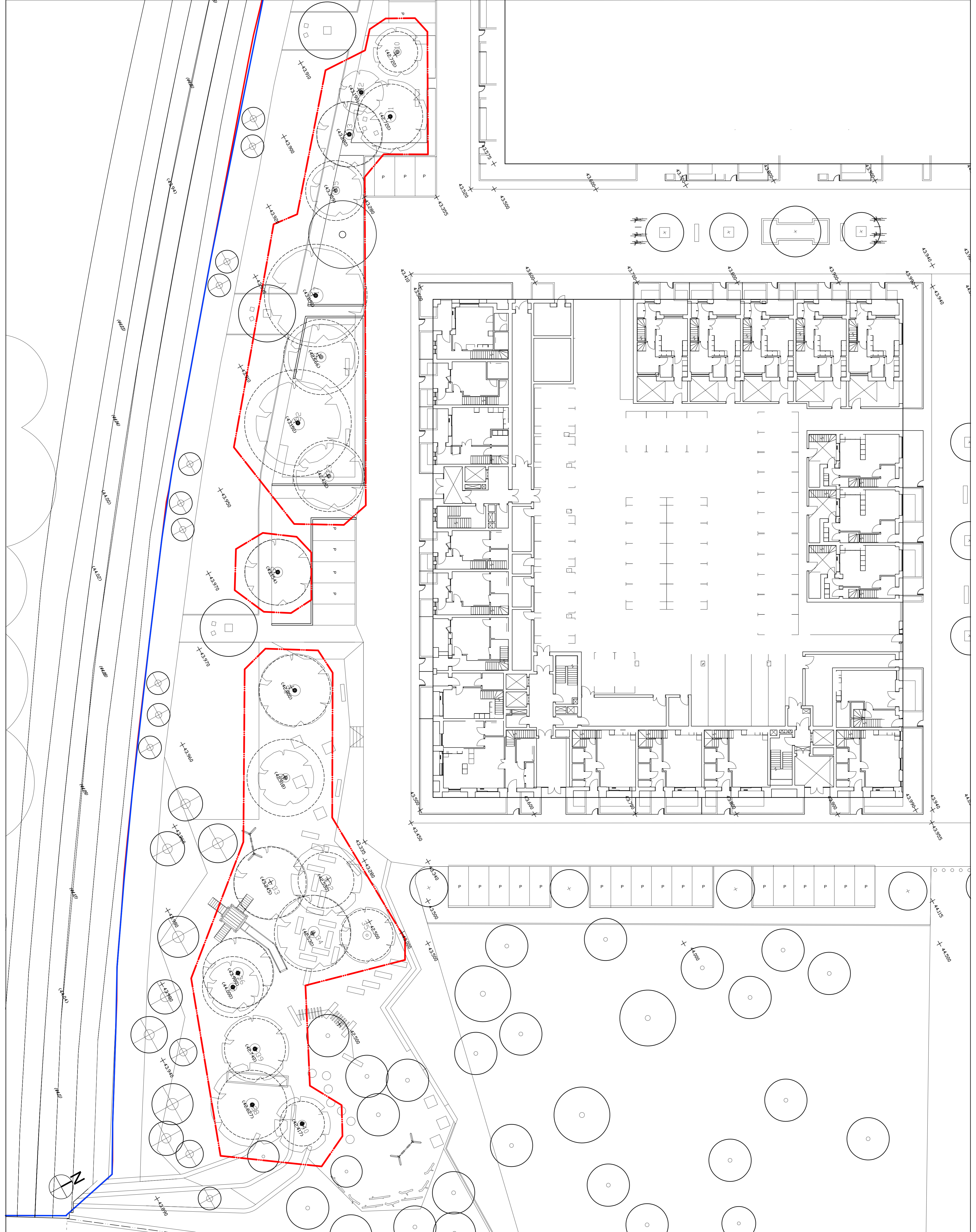


- GENERAL NOTES:
1. ALL DIMENSIONS AND LEVELS SHALL BE CHECKED ON SITE PRIOR TO COMMENCEMENT OF WORKS.
  2. ALL LANDSCAPE DRAWINGS TO BE READ IN CONJUNCTION WITH ALL RELEVANT ENGINEER'S AND ARCHITECT'S DRAWINGS AND ALL DRAWINGS TO BE READ IN CONJUNCTION WITH THE LANDSCAPE SPECIFICATION CONCERNING THE DRAWINGS SHOULD BE REFERRED TO THE DRAWING SPECIFICATION.
  3. ALL DIMENSIONS IN MILLIMETRES UNLESS NOTED OTHERWISE.
  4. DO NOT SCALE OFF THIS DRAWING.
  5. EXISTING SERVICE ALIGNMENTS SHALL BE CHECKED ON SITE BY THE LANDSCAPE ARCHITECT PRIOR TO COMMENCEMENT OF WORKS.
  6. THE CONTENT OF THIS DRAWING IS TO BE READ IN CONJUNCTION WITH THE LATEST PROJECT CIVIL RISK REGISTER.



- LEGEND
- Outline Application Boundary
  - Detailed Application Boundary
  - Existing trees to be retained
  - Road Protection Area (RPA)
  - Tree protection boundary to be retained in situ in accordance with BS5837:2012. Trees in Retention to Construction
  - DO NOT SCALE OFF THIS DRAWING
  - EXISTING SERVICE ALIGNMENTS SHALL BE CHECKED ON SITE BY THE LANDSCAPE ARCHITECT PRIOR TO COMMENCEMENT OF WORKS.
  - THE CONTENT OF THIS DRAWING IS TO BE READ IN CONJUNCTION WITH THE LATEST PROJECT CIVIL RISK REGISTER

Note:  
 1) Drawings to be read in conjunction with Tree Constraints Report by Landmark Trees August 2013.  
 2) Tree works including pruning and removal to be carried out by an AA approved arboriculturalist in strict accordance with BS5837:2012. Trees in Retention to Construction.



00	23/09/2014	Planning	RW	CH
Rev	Date	Description	Drawn	Checked

**grant associates**  
 Landscape Architecture, Urban Design, Creative Ecology  
 22 Milk Street, Bishops Cleeve, L67 4JG  
 T: +44 (0) 1335 33464 F: +44 (0) 1335 34083  
 E: info@grant-associates.co.uk

CLIENT  
 Redrow Homes Ltd.

PROJECT  
 Peel Centre, Collindale  
 Stage 1

TITLE  
 Retained Tree Protection Measures  
 Southern Boundary

Scale: 1:200 @ A1  
 Date: 06/08/2014  
 Status: Planning  
 Drawn: HV  
 Checked: CH  
 Approved: PC

Drawing Number: PC398-P01-RT-00-1-001-P  
 Rev: 00