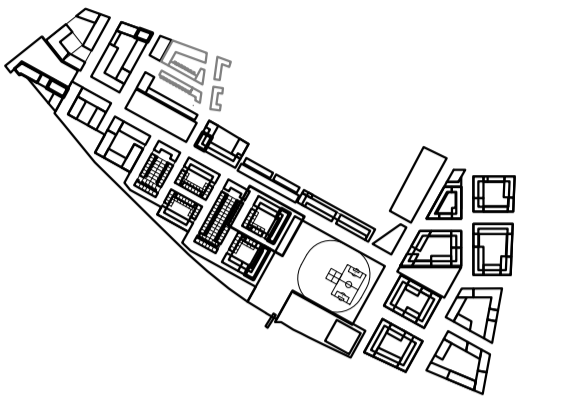


- GENERAL NOTES:
1. ALL DIMENSIONS AND LEVELS SHALL BE CHECKED ON SITE PRIOR TO CONSTRUCTION WORK COMMENCING
 2. ALL LANDSCAPE DRAWINGS TO BE READ IN CONJUNCTION WITH ALL RELEVANT ENGINEER'S AND ARCHITECT'S DRAWINGS AND SPECIFICATIONS
 3. ALL DRAWINGS TO BE READ IN CONJUNCTION WITH THE LANDSCAPE SPECIFICATION
 4. ANY DISCREPANCY CONCERNING THE DRAWINGS SHOULD BE REFERRED TO THE CA IMMEDIATELY
 5. ALL DIMENSIONS IN MILLIMETRES UNLESS NOTED OTHERWISE
 6. ALL LEVELS IN METRES
 7. DO NOT SCALE OFF THIS DRAWING
 8. EXISTING SERVICE ALIGNMENTS SHALL BE CHECKED ON SITE BY THE CONTRACTOR PRIOR TO CONSTRUCTION WORK COMMENCING
 9. THE CONTENT OF THIS DRAWING IS TO BE READ IN CONJUNCTION WITH THE LATEST PROJECT CDM RISK REGISTER

LOCATION PLAN:



LEGEND:

- Black Macadam base with tar spray and stone chippings finishing course. Edge treatments: upstand kerb edges and trims to all planters, path edges and flush trims to be 200mm high x 50mm wide pc concrete in kerbs. Colour: Grey.
- G1: Amenity lawn turf placed over min. 150mm depth proprietary lightweight soil.
- G2: Flowering lawn turf placed over min. 150mm depth proprietary lightweight soil.
- ORN2: Proposed planting bed - mixed shrub and herbaceous planting within min. 450mm depth proprietary lightweight soil.
- ORN3: Raised bed with edible herbaceous planting and fruiting trees.
- ORN4: New planting bed - ornamental grasses with small tree / large shrub planting within min. 750mm depth proprietary lightweight soil.
- EV1: Evergreen ground cover with highlight bulbs, herbs and grasses
- Loose gravel maintenance access path to building facade
- Extent of vertical ventilation outlets
- Approximate alignment of level change within podium slab
- Proposed fruiting or flowering tree planting with seasonal intent planted within min. 750mm depth proprietary lightweight soil.
- Proposed specimen fruiting or flowering tree planting within min. 750mm depth proprietary lightweight soil.
- *C Climbing plants with herbaceous ground cover
- Raised timber planter with timber coping seat
- Proprietary timber and metalwork bench 2000mm x 400mm, with back and arm rest
- Bollard lighting to primary routes. To Engineer's details and specification
- Proprietary play sculpture

Rev.	Date	Description	HY	CH
00	22/08/2014	Planning		

grant associates
 Landscape Architecture, Urban Design, Creative Ecology
 22 Milk Street, Bath BA1 1UT
 T: +44 (0) 1225 332664, F: +44 (0) 1225 420803
 E: info@grant-associates.uk.com

CLIENT
Redrow Homes Ltd.

PROJECT
Peel Centre, Collindale Stage 1

TITLE
**Podium Gardens - Block P
 General Arrangement Plan**

Scale:	1:100 @ A1	Date:	07/08/2014	Drawn:	HY	Checked:	CH	Approved:	PC	
Status:	Planning									
Drawing Number:	PCC398-P01-GE-01-1-005-P								Rev:	00

