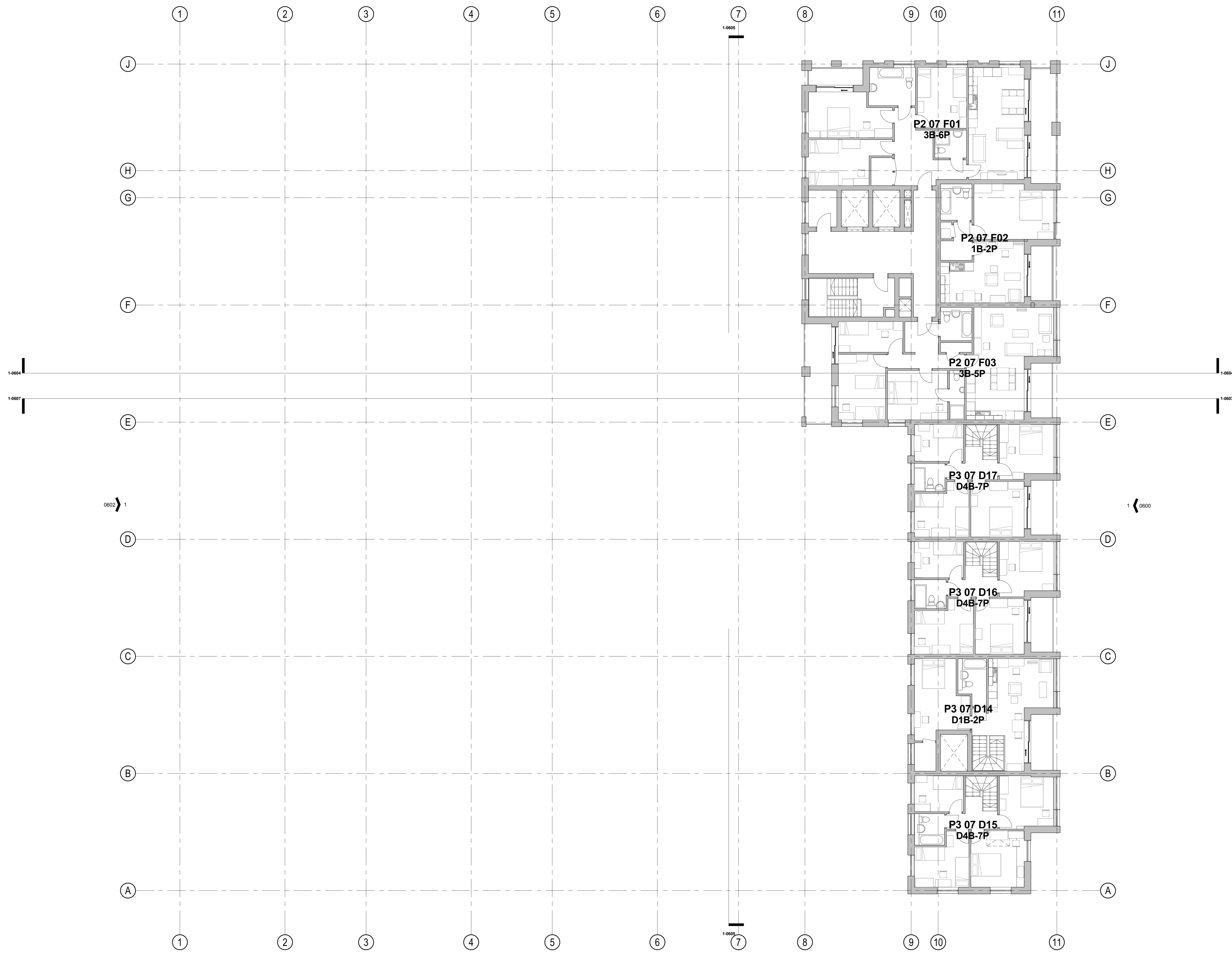


0601
1



0603
1

Notes:
 © Felden Clegg Bradley Studios LLP
 Internal furniture layouts for illustrative purposes only

Amendment
 1 Issued for Planning

Date
 27.08.2014

Job/Drawing No
 1735-FCB-ZP-0207

Amendment
 P1

FeldenCleggBradleyStudios
 LLP
 Twenty Tottenham Street
 London
 W11 4RF
 t +44 (0)20 73235737
 e london@fcbstudios.com

Peel Centre Colindale - Plot P
Level 7 - GA Plan

Scale 1:100 @ A0
 Date Aug 2014
 Drawn Studio 26

PLANNING

27.08.2014

All Dimensions to be checked on site

